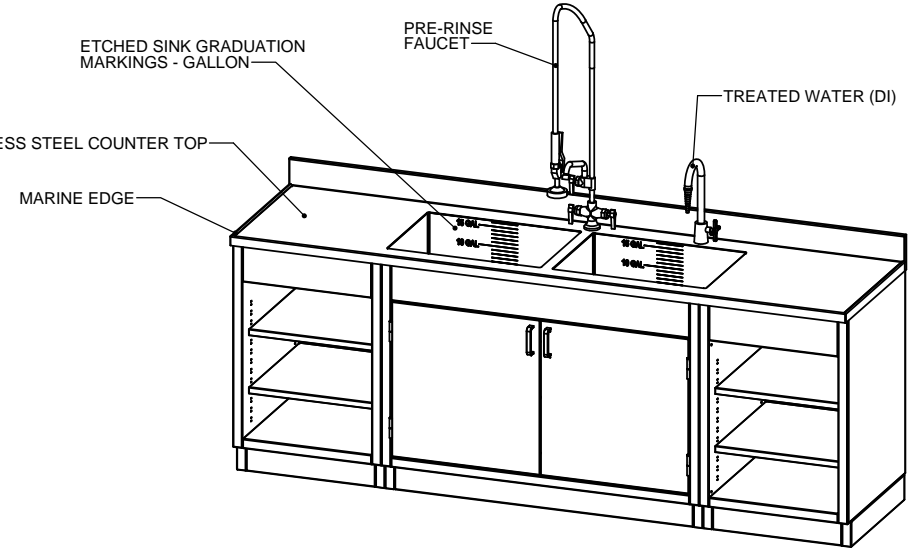
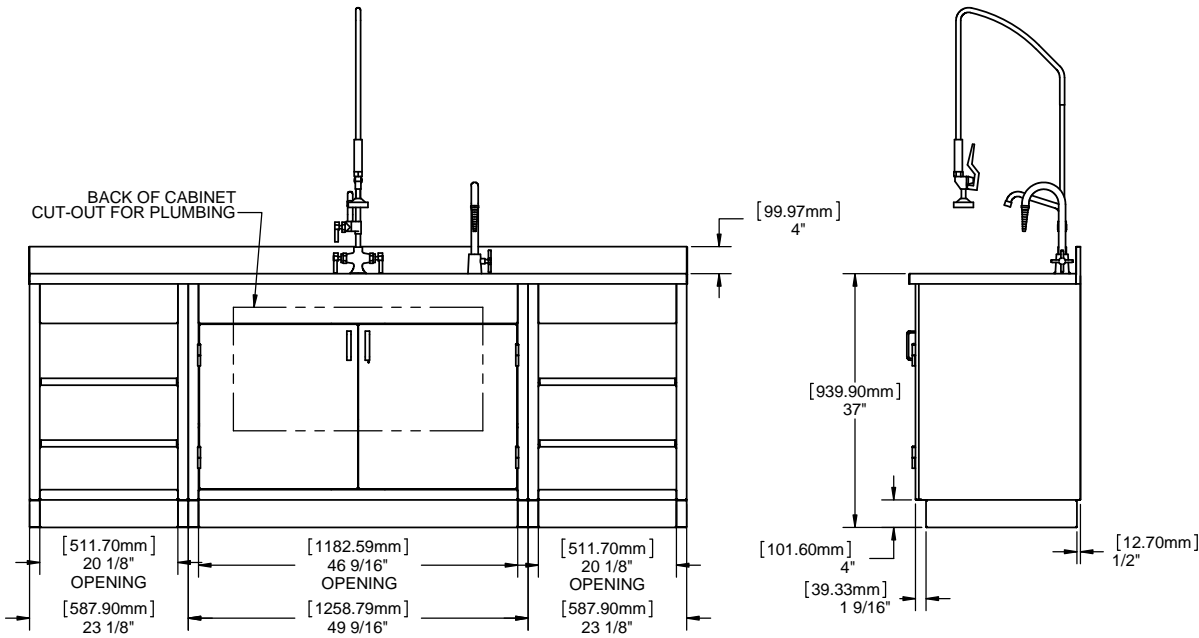
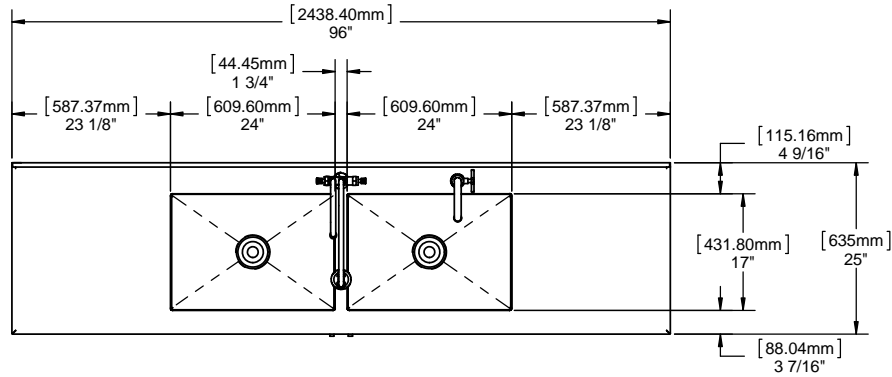


Design Approval: **ALL CUSTOM DESIGNS ARE NON-CANCELLABLE AND NON-RETURNABLE.** This endorsed approval drawing must be received in order to release your order for production. By signing, you certify your approval in the following areas:

- Overall Dimensions
- Hardware (fixtures, casters, accessories)
- Material
- Delivery Access (will it fit through doors)
- Construction and Design
- Facility Integration (rough in alignment, etc)

Approval Signature _____ Date: _____
 Print Name and Title _____
 (Signature, Date, Printed Name & Title are all required)



NOTES:

1. FULLY WELDED 300 SERIES STAINLESS STEEL CONSTRUCTION
2. PRE-RINSE FAUCETS: KN50-1000-BR GOOSE NECK WITH BUILT IN PRERINSE INLET - 1/2" NPSM MALE WITH COMPRESSION FITTINGS. OPERATING PRESSURE 20-125 PSI OPERATING TEMP RANGE 40-180 °F
3. TREATED (DI) WATER: BL-5850-01TL. FLOW RATE 50 PSI - 120 PSI, RATE OPERATING PRESSURE: 20-125 PSI, RATED OPERATING TEMPERATURE: 40-140 °F
4. SINK DRAIN: SINK OPENING DIAMETER 3-1/2", NPS: 1-1/2" FACE FLANGE DIAMETER: 4-1/2"
5. UTILITY REQUIREMENT: COLD WATER - 20 TO 50 PSIG 70°F MAX. HOT WATER - 20 TO 50 PSIG 120°F TO 140°F.
6. STANDARD MATERIAL THICKNESS FOR CABINET COMPONENTS IS AS FOLLOWS:
 - BASE, SIDE PANELS, TOP: 16 GAUGE
 - OUTSIDE SIDE PANELS, SHELVES, BACK: 18 GAGE
 - GLASS DOORS: 18 GAUGE FRONT AND BACK OVER 16 GAUGE FRAMES
7. UNLESS OTHERWISE NOTED: DOORS ARE NON LOCKING WITH SPRING LOADED DOOR CATCHES
8. DOOR GLASS: 3/16" THICK, TEMPERED
9. SHELF STANDARDS ARE ADJUSTABLE ON 1.5" CENTERS
10. SHELF SIZE: WIDTH=OVERALL CABINET WIDTH - 3.25" +/- 1/8", DEPTH=OVERALL CABINET DEPTH - 3.06" +/- 1/8"

ANY PHYSICAL, DIMENSIONAL OR PERFORMANCE SPECIFICATIONS SHALL NOT BE REVISED WITHOUT WRITTEN AUTHORIZATION FROM FHC	
 THIRD ANGLE PROJECTION	INCHES
CRITICAL TO QUALITY	 Weight (pounds) 439.29
TITLE DUAL PROCESSING SINK TOLERANCES UNLESS OTHERWISE SPECIFIED	
ANGLES: ±1° FRACTIONS: ± 1/64	DECIMALS .XX = ± .030 .XXX = ± .015 .XXXX = ± .005
	DRAWN BY L.ADKISSON CHECKED BY _____ SCALE 1:14
DATE 10/18/2013 SHEET 1 OF 1	
DRAWING NUMBER FHCPS259637-3-1-3-1	

CONFIDENTIAL & PROPRIETARY TO FUTURE HEALTH-CONCEPT NOT TO BE COPIED OR SHOWN TO ANYONE WITHOUT THE EXPRESS PERMISSION OF FHC

AA	RELEASED FOR APPROVAL	L.ADKISSON	10/18/2013
REV.	DESCRIPTION	CHANGED BY:	DATE
REVISIONS			