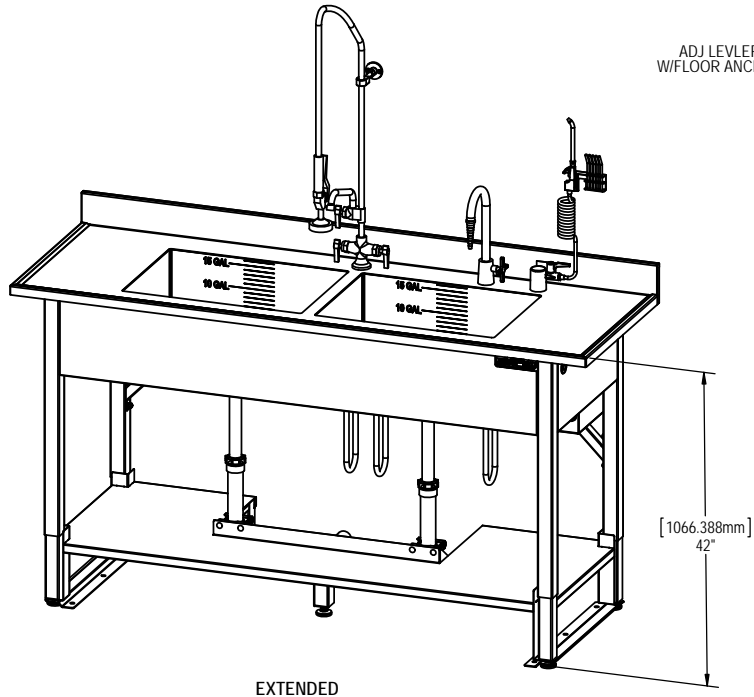
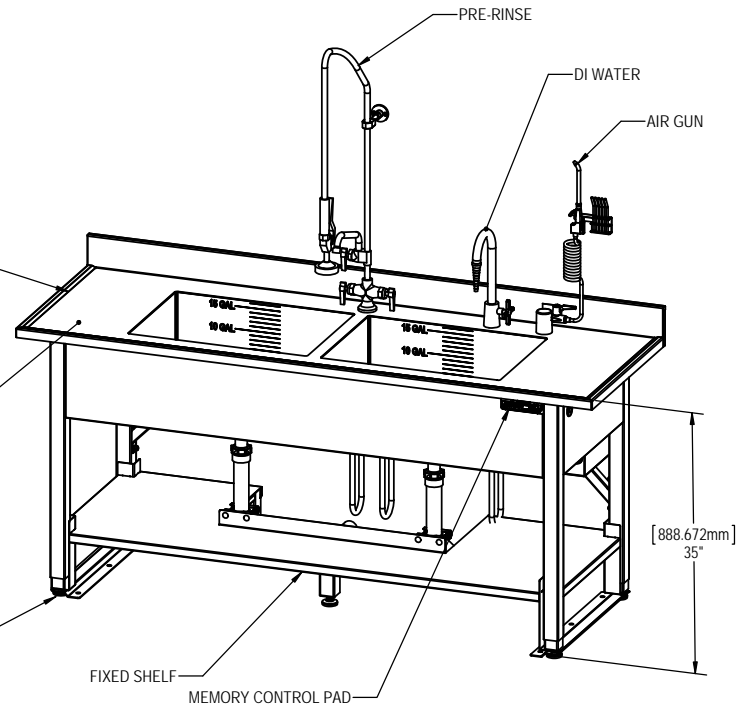


Design Approval - **ALL CUSTOM DESIGNS ARE NON-CANCELLABLE AND NON-RETURNABLE**. This endorsed approval drawing must be received in order to release your order for production. Manufacturer reserves the right to alter design to current manufacturing standards. By signing, you certify your approval in the following areas:

- Overall Dimensions
- Material
- Construction and Design
- Hardware (fixtures, casters, accessories)
- Delivery Access (will it fit through doors)
- Facility Integration (rough in alignment, etc)

Approval Signature _____ Date: _____
 Print Name and Title _____
 (Signature, Date, Printed Name & Title are all required)

AAMI COMPLIANT FOR:
 HEIGHT
 SINK BOWL DEPTH



NOTES:

- 1) GOOSE NECK FAUCET
 INLET - 1/2" NPSM MALE WITH COMPRESSION FITTINGS
 OPERATING PRESSURE 20-125 PSI
 OPERATING TEMP RANGE 40-180 DEG. F
- 2) UTILITY REQUIREMENT
 COLD WATER - 20 TO 50 PSIG 70 DEG. F MAX
 HOT WATER - 20 TO 50 PSIG 120 DEG. F TO 140 DEG. F
- 3) SINK DRAIN: SINK OPENING DIA.: 2"
 NPS: 1-1/2"
 FACE FLANGE DIA.: 3"

- 4) 304 SERIES STAINLESS STEEL
- 5) WELDED CONSTRUCTION
- 6) LINEAR UNIT - CONSISTING OF CYLINDER AND A LINEAR GUIDE.
 LOAD MAX 1,500 N PER CYLINDER
 LIFT LENGTH UP TO 300 MM (11.82")
- 7) PUMP:
 MAX LOAD: 1,000 KG
 MAXIMUM LIFT SPEED WITH ELECTRIC MOTOR 30 MM/S (1.18"/S)
- 8) ELECTRIC DRIVE:
 SYSTEM VOLTAGE: 230/110 VAC
 ENGINE VOLTAGE: 29 VDC
 NOMINAL RATING APPROX: 140VA
 NOMINAL SPEED 120 MIN-1
 OVERLOAD PROTECTION

AA	RELEASE FOR CUSTOMER APPROVAL		D.QUALLS	5/13/16
REV.	DESCRIPTION	ECO #	BY:	DATE
REVISIONS				

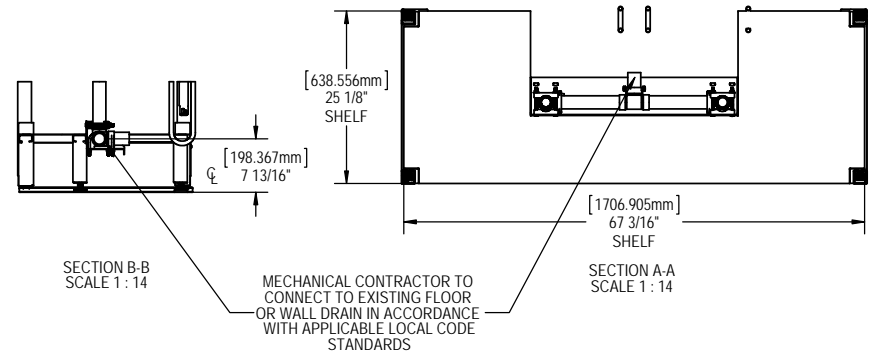
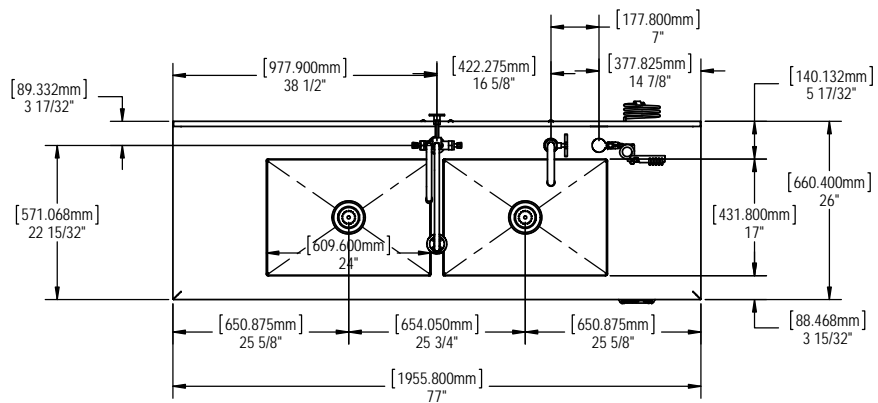
WEIGHT (LBS) 338.53	THIRD ANGLE PROJECTION	INCHES	MATERIAL	FINISH
TITLE ADJ. HEIGHT DOUBLE BOWL PROCESSING SINK				

TOLERANCES UNLESS OTHERWISE SPECIFIED		DATE
ANGLES: ±1°	XXX = ±.020	5/13/16
FRACTIONS: ±1/64	XXXX = ±.015	DATE
	XXXXX = ±.005	DATE
DRAWN BY D.QUALLS	CHECKED BY	DATE
APPROVED BY		DATE
SCALE 1:12		SHEET 1 OF 3

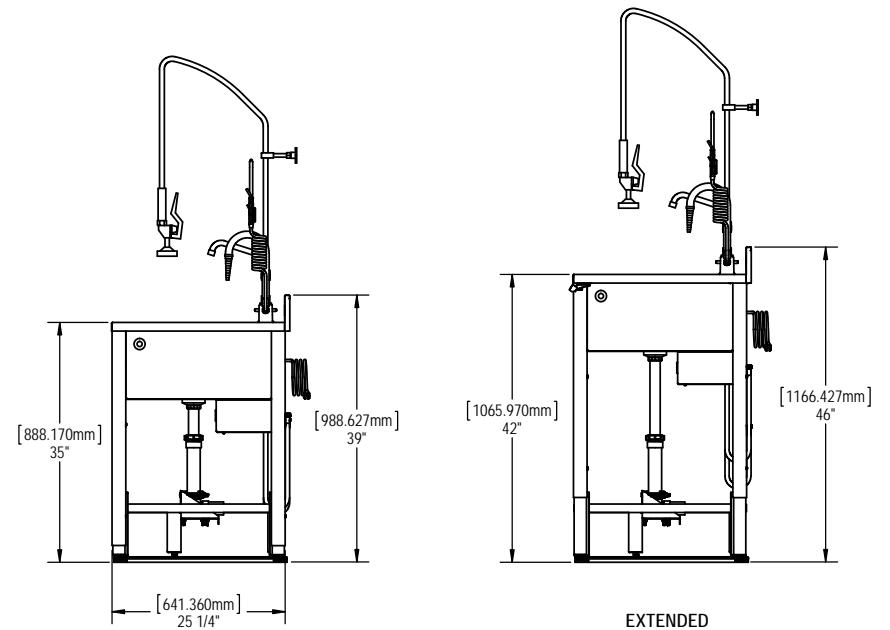
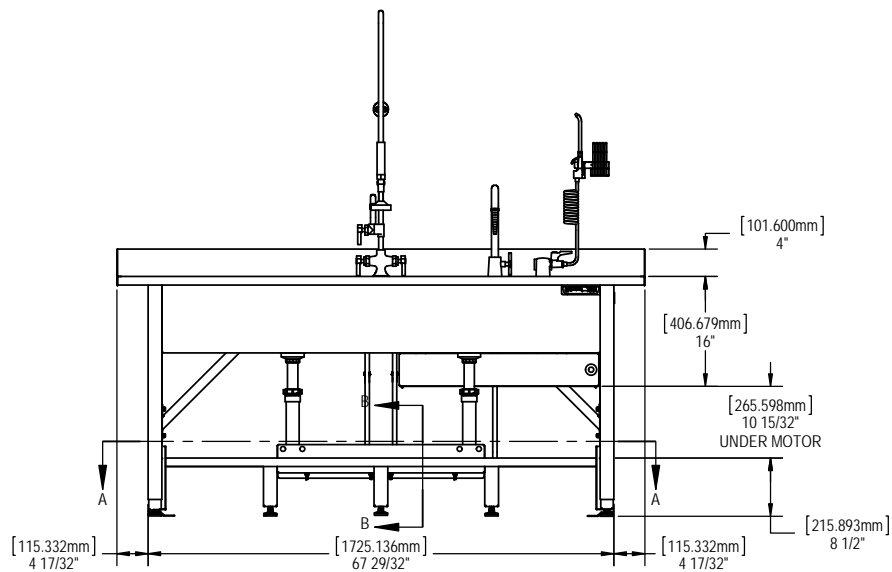
DRAWING NUMBER
FHCPS267735DB-9-1-3-2

ANY PHYSICAL DIMENSIONAL OR PERFORMANCE SPECIFICATIONS SHALL NOT BE REVISED WITHOUT WRITTEN AUTHORIZATION FROM MAC MEDICAL ENGINEERING

CONFIDENTIAL & PROPRIETARY TO FHC. NOT TO BE COPIED OR SHOWN TO ANYONE WITHOUT THE EXPRESS PERMISSION OF FHC



RECOMMENDED TO HAVE 7/8" CLEARANCE SPACE AROUND SINK (SIDES AND BACK)



CONFIDENTIAL & PROPRIETARY TO FHC. NOT TO BE COPIED OR SHOWN TO ANYONE WITHOUT THE EXPRESS PERMISSION OF FHC

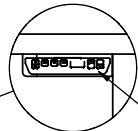
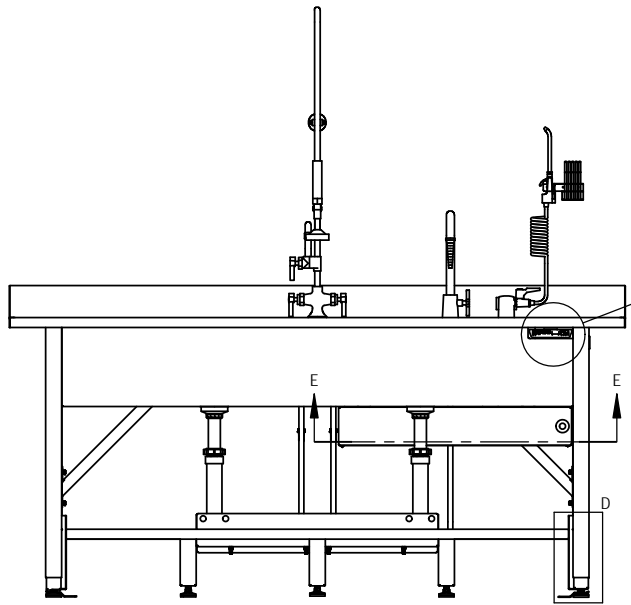
TOLERANCES UNLESS OTHERWISE SPECIFIED	
ANGLES: ±1°	DECIMALS: .XX = ±.003
FRACTIONS: ±1/64	DECIMALS: .XXX = ±.015
	XXX = ±.008
DRAWN BY	DATE
CHECKED BY	DATE
APPROVED BY	DATE
SCALE	SHEET
1:16	2 OF 3



WEIGHT (LBS)	THIRD ANGLE PROJECTION	MATERIAL	FINISH
338.53			

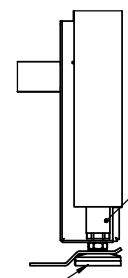
TITLE: **ADJ. HEIGHT DOUBLE BOWL PROCESSING SINK** DRAWING NUMBER: **FHCPS267735DB-9-1-3-2**

ANY PHYSICAL DIMENSIONAL OR PERFORMANCE SPECIFICATIONS SHALL NOT BE REVISED WITHOUT WRITTEN AUTHORIZATION FROM MAC MEDICAL ENGINEERING



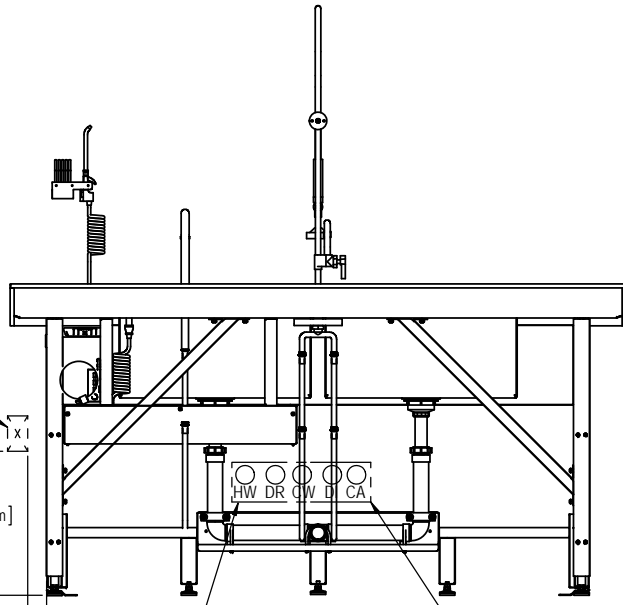
DETAIL C
SCALE 1 : 6

MEMORY CONTROL PAD
W/FOUR PRE-SET
MEMORY CONTROL



DETAIL D
SCALE 1 : 4

LINEAR UNIT WITH CYLINDER
RUBBER ADJ. LEVLER



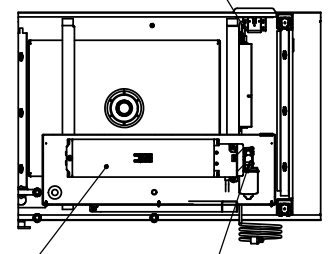
SUGGESTED OUTLET
LOCATION. CHECK YOU
LOCAL BUILDING CODES
BEFORE INSTALLING

x 1
[457.200mm]
18"
[60.325mm]
2 3/8"

MECHANICAL CONTRACTOR TO
CONNECT TO EXISTING FLOOR
OR WALL DRAIN IN ACCORDANCE
WITH APPLICABLE LOCAL CODE
STANDARDS

CHECK LOCAL CODES
FOR LOCATION

POWER CORD LOCATION



SECTION E-E

PUMP W/COVER ELECTRIC MOTOR

RECOMMENDATIONS:

1. UTILITY CONNECTIONS: BRAIDED HOSES ARE USED THEY NEED TO HAVE 12" TO 13" OF PLAY IN ORDER TO ALLOW THE SINK TO RAISE AND LOWER.
2. CHECK ALL LOCAL CODES.

WEIGHT (LBS) 338.53	THIRD ANGLE PROJECTION	INCHES	MATERIAL	FINISH
------------------------	------------------------	--------	----------	--------

TITLE
ADJ. HEIGHT DOUBLE BOWL PROCESSING SINK

TOLERANCES UNLESS OTHERWISE SPECIFIED		DATE
ANGLES: ±1°	DECIMALS: .XXX = ±.003	5/13/2016
FRACTIONS: ±1/64	DECIMALS: .XXX = ±.015	DATE
	DECIMALS: .XXXX = ±.005	DATE
DRAWN BY		DATE
CHECKED BY		DATE
APPROVED BY		DATE
SCALE 1:12		SHEET 3 OF 3



DRAWING NUMBER
FHCPS267735DB-9-1-3-2

ANY PHYSICAL DIMENSIONAL OR PERFORMANCE SPECIFICATIONS SHALL NOT BE REVISED WITHOUT WRITTEN AUTHORIZATION FROM MAC MEDICAL ENGINEERING

CONFIDENTIAL & PROPRIETARY TO FHC. NOT TO BE COPIED OR SHOWN TO ANYONE WITHOUT THE EXPRESS PERMISSION OF FHC