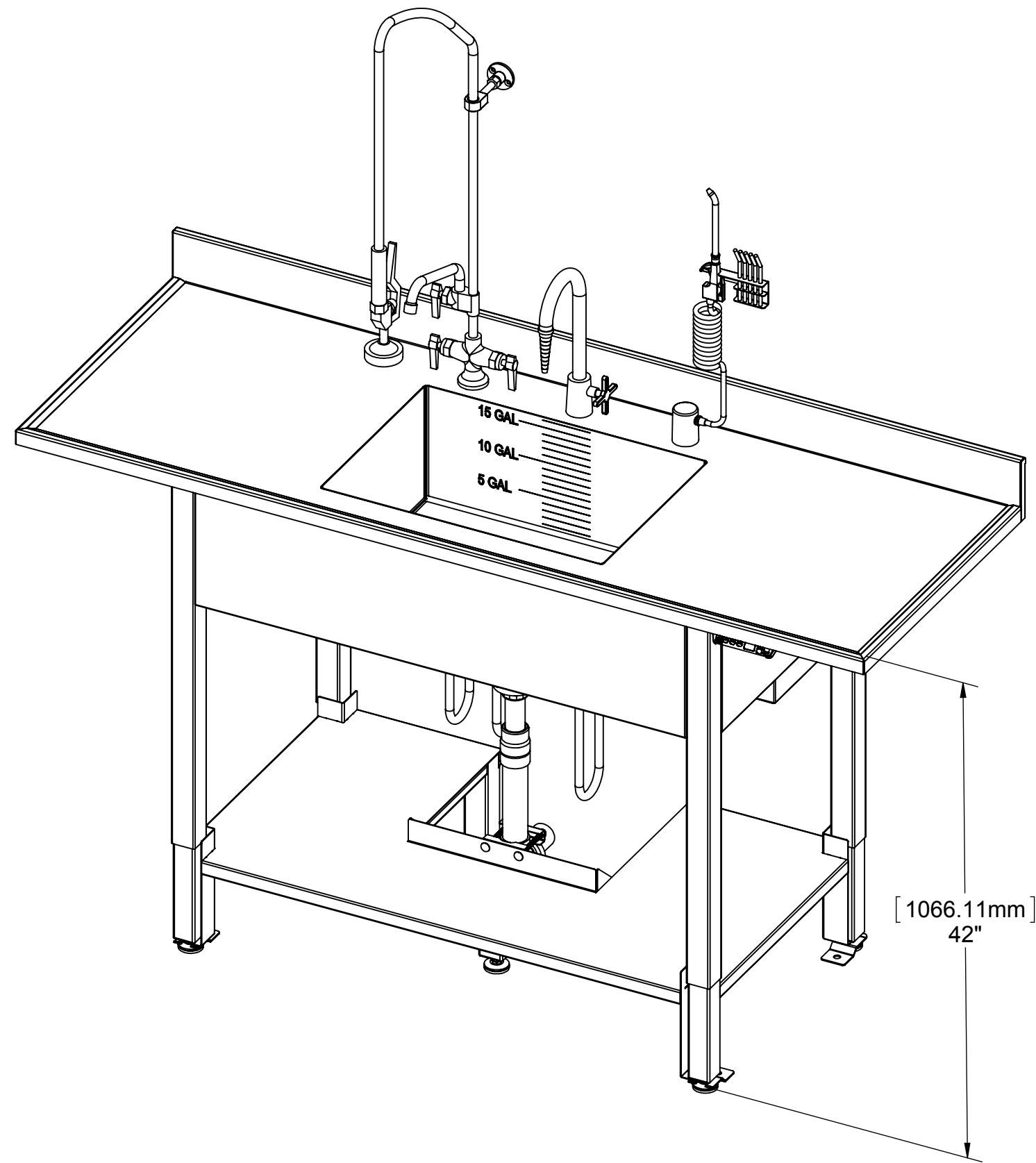
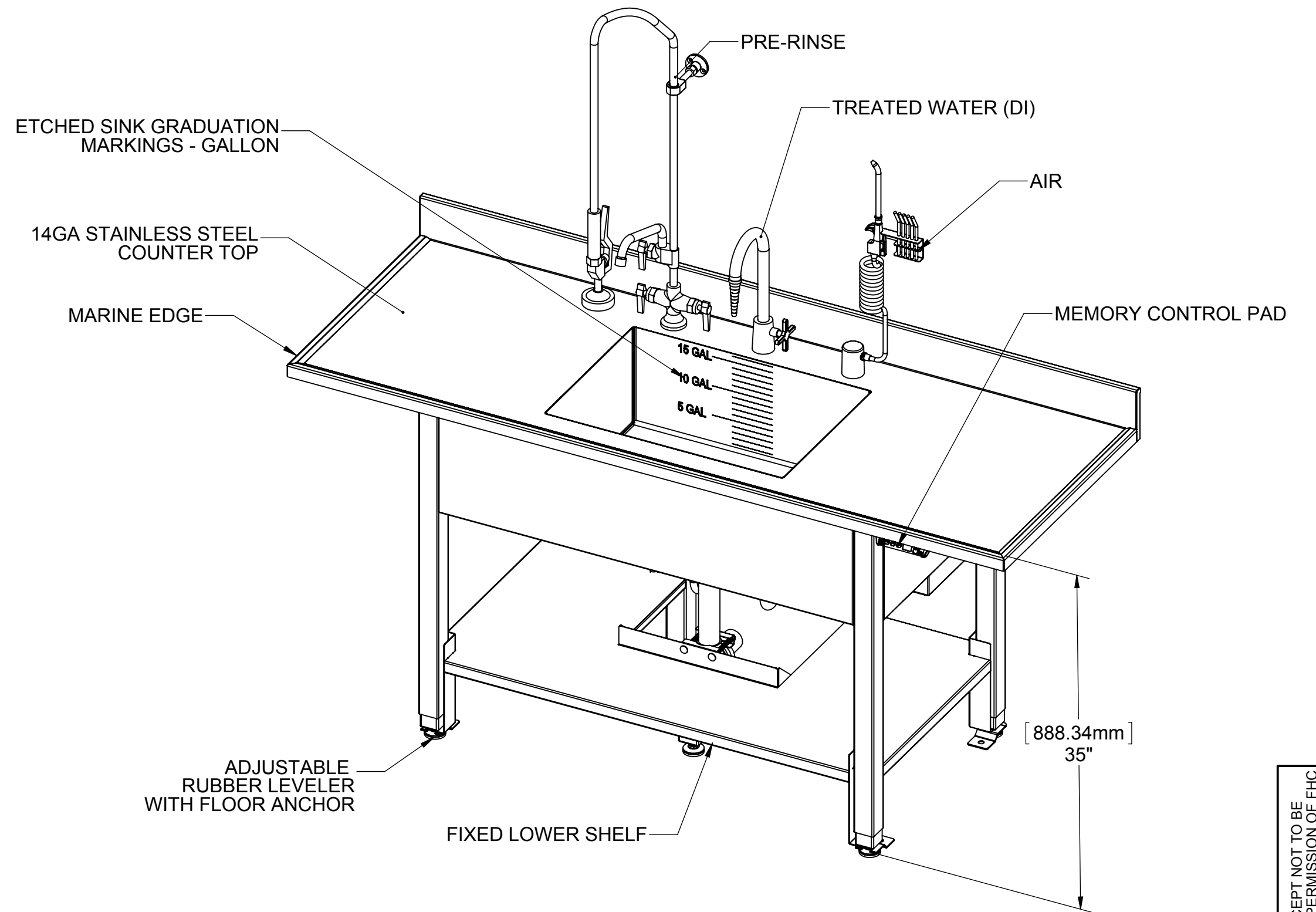


Design Approval- **ALL CUSTOM DESIGNS ARE NON-CANCELLABLE AND NON-RETURNABLE.** This endorsed approval drawing must be received in order to release your order for production. By signing, you certify your approval in the following areas:

-Overall Dimensions -Hardware (fixtures, casters, accessories)
 -Material -Delivery Access (will it fit through doors)
 -Construction and Design -Facility Integration (rough in alignment, etc)

Approval Signature _____ Date: _____
 Print Name and Title _____
 (Signature, Date, Printed Name & Title are all required)



NOTES:

- 1) PRE-RINSE FAUCET: (KN50-1000-AF2)
GOOSE NECK WITH BUILT IN PRE-RINSE
INLET - 1/2" NPSM MALE WITH COMPRESSION FITTINGS
OPERATING PRESSURE 20-125 PSI
OPERATING TEMP RANGE 40-180 DEG. F
- 2) UTILITY REQUIREMENT
COLD WATER - 20 TO 50 PSIG 70 DEG. F MAX
HOT WATER - 20 TO 50 PSIG 120 DEG. F TO 140 DEG. F
- 3) SINK DRAIN: SINK OPENING DIA.: 3-1/2"
NPS: 1-1/2"
FACE FLANGE DIA.: 4-1/2"
- 4) AIR GUN WITH STANDARD 5 TIP GUN & HOSE
MCMaster 3321K3 & 54635K1
- 5) AIR INLET: WATER SAVER B1131 WITH B1136-02-08R

- 6) 300 SERIES STAINLESS STEEL
- 7) WELDED CONSTRUCTION
- 8) LINEAR UNIT : CONSISTING OF CYLINDER AND A LINEAR GUIDE.
LOAD MAX 1,500 N PER CYLINDER
LIFT LENGTH UP TO 300 MM (11.82")
- 9) PUMP:
MAX LOAD: 1,000 KG
MAXIMUM LIFT SPEED WITH ELECTRIC MOTOR 30 MM/S (1.18"/S)
- 10) ELECTRIC DRIVE:
SYSTEM VOLTAGE: 230/110 VAC
ENGINE VOLTAGE: 29 VDC
NOMINAL RATING APPROX: 140VA
NOMINAL SPEED 120 MIN-1
OVERLOAD PROTECTION

REV.	DESCRIPTION	CHANGED BY:	DATE
AA	RELEASED FOR APPROVAL	L.ADKISSON	08/16/2012
REVISIONS			

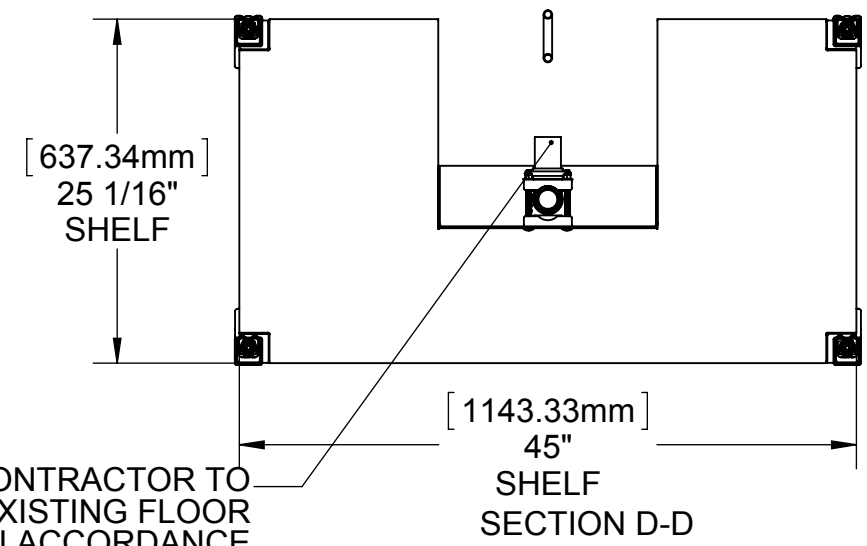
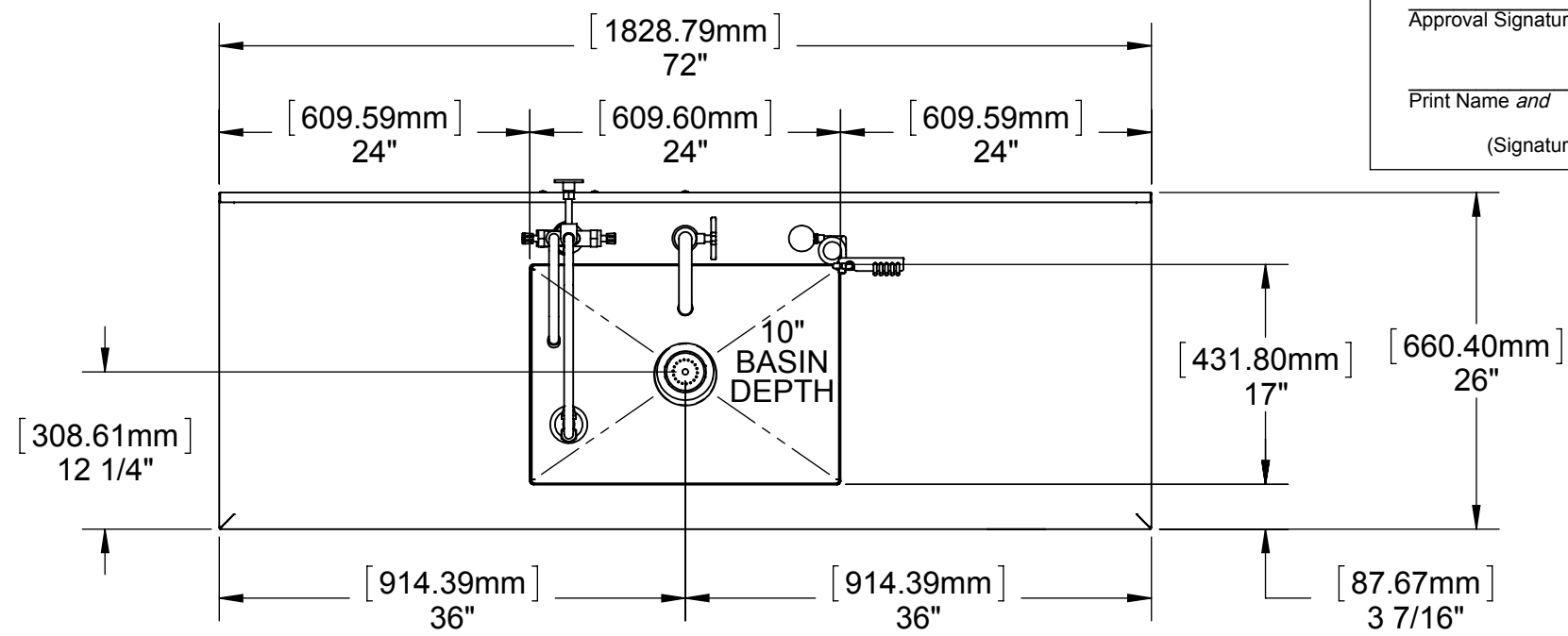
ANY PHYSICAL, DIMENSIONAL OR PERFORMANCE SPECIFICATIONS SHALL NOT BE REVISED WITHOUT WRITTEN AUTHORIZATION FROM FHC	
THIRD ANGLE PROJECTION	INCHES
CRITICAL TO QUALITY	Weight (pounds) 278.73
TITLE ADJ. HEIGHT PROCESSING SINGLE SINK 26" X 72 1/2" X 35-42"	
TOLERANCES UNLESS OTHERWISE SPECIFIED	
ANGLES: ±1° FRACTIONS: ± 1/64	DECIMALS .XX = ± .030 .XXX = ± .015 .XXXX = ± .005
	DRAWN BY D. HEATH CHECKED BY L.ADKISSON SCALE 1:10
	DATE 02.11.14 DATE 02/13/2014 SHEET 1 OF 3
DRAWING NUMBER FHCPS267235-9-1-3-2	

CONFIDENTIAL & PROPRIETARY TO FUTURE HEALTH CONCEPT NOT TO BE COPIED OR SHOWN TO ANYONE WITHOUT THE EXPRESS PERMISSION OF FHC

Design Approval- **ALL CUSTOM DESIGNS ARE NON-CANCELLABLE AND NON-RETURNABLE.** This endorsed approval drawing must be received in order to release your order for production. By signing, you certify your approval in the following areas:

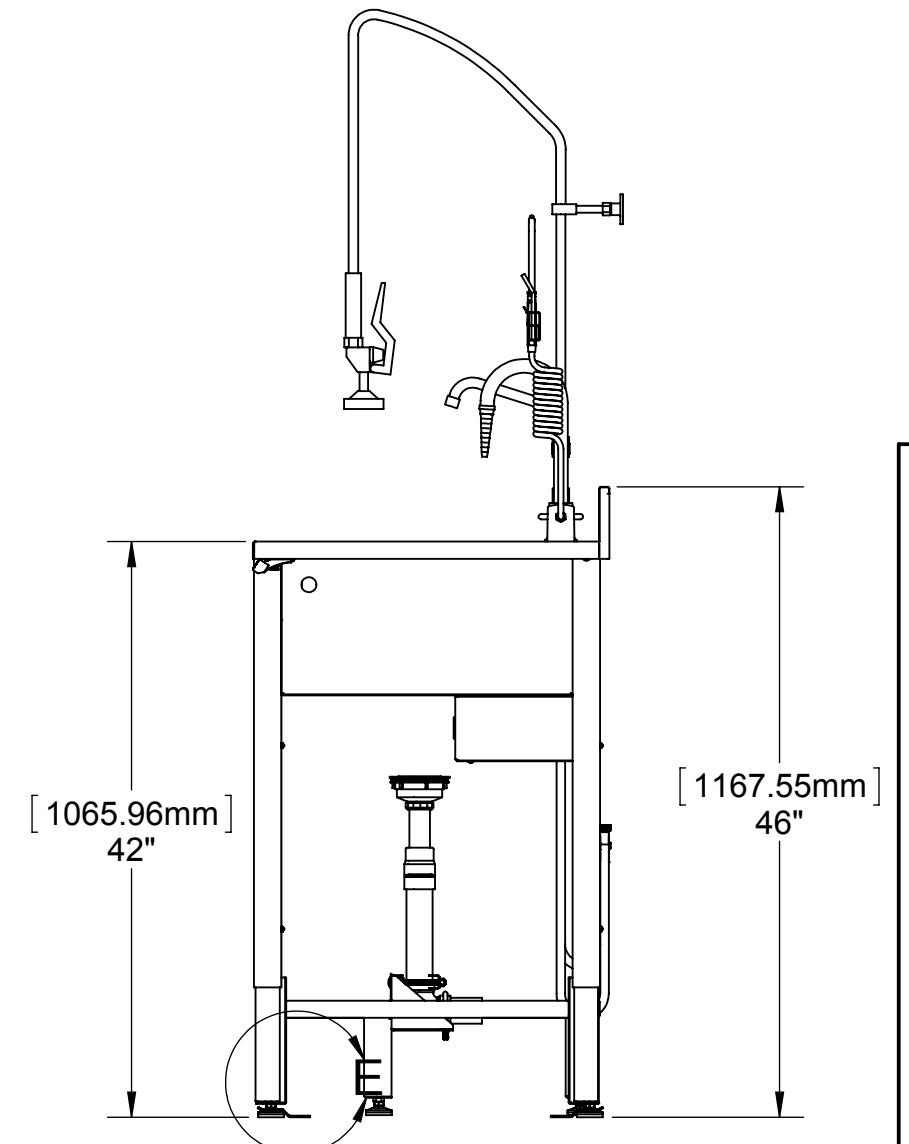
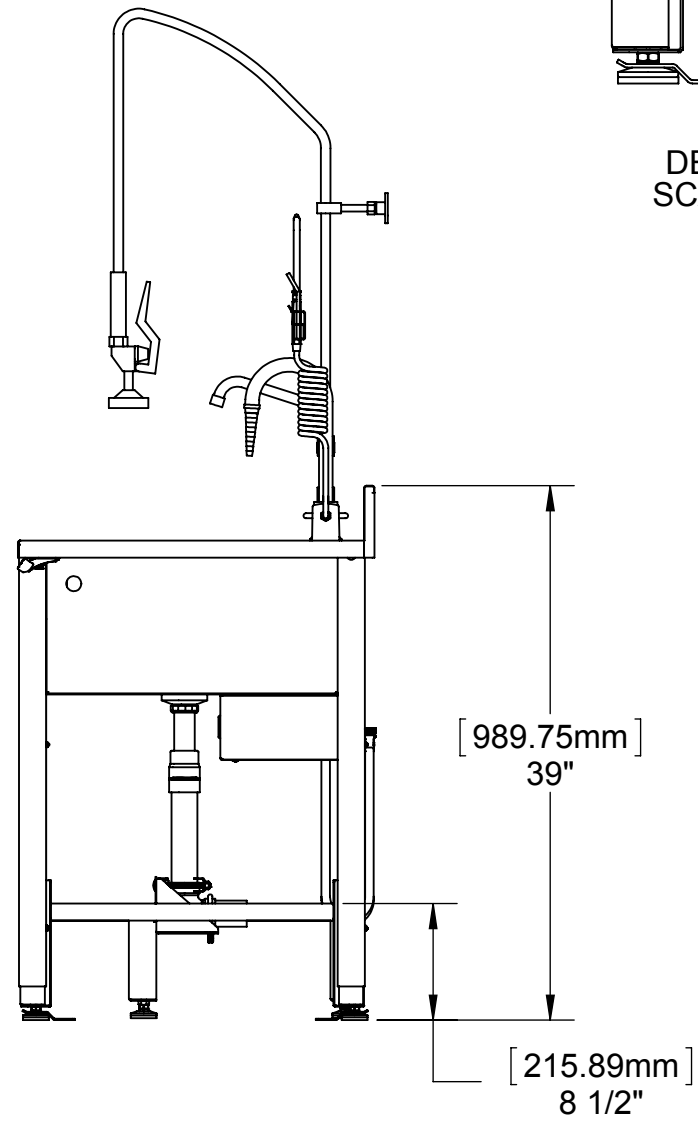
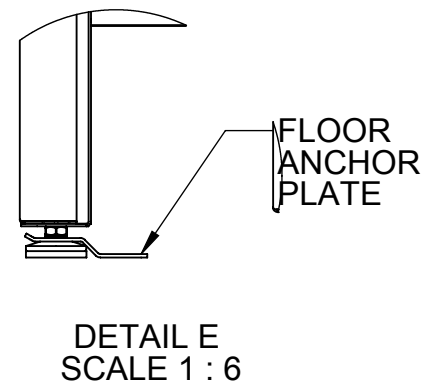
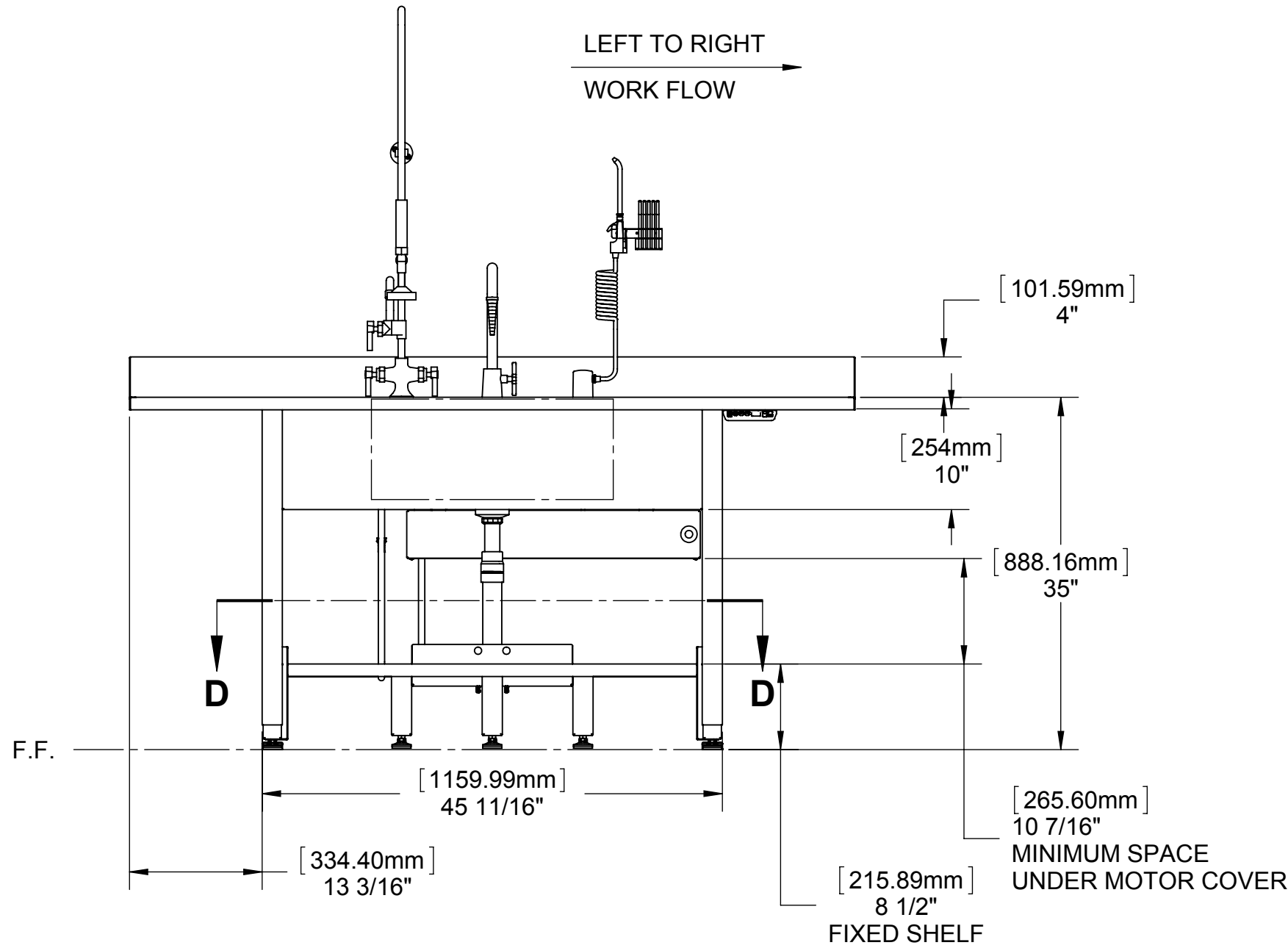
- Overall Dimensions
- Material
- Construction and Design
- Hardware (fixtures, casters, accessories)
- Delivery Access (will it fit through doors)
- Facility Integration (rough in alignment, etc)

Approval Signature _____ Date: _____
 Print Name and Title _____
 (Signature, Date, Printed Name & Title are all required)



MECHANICAL CONTRACTOR TO CONNECT TO EXISTING FLOOR OR WALL DRAIN IN ACCORDANCE WITH APPLICABLE LOCAL CODE STANDARDS.

RECOMMENDED TO HAVE 7/8" CLEARANCE SPACE AROUND SINK (SIDES AND BACK)



ANY PHYSICAL, DIMENSIONAL OR PERFORMANCE SPECIFICATIONS SHALL NOT BE REVISED WITHOUT WRITTEN AUTHORIZATION FROM FHC

THIRD ANGLE PROJECTION	INCHES
CRITICAL TO QUALITY	Weight (pounds) 278.73

TITLE **ADJ. HEIGHT PROCESSING SINGLE SINK**
 26" X 72 1/2" X 35-42"

TOLERANCES UNLESS OTHERWISE SPECIFIED
 ANGLES: ±1°
 FRACTIONS: ± 1/64
 DECIMALS .XX = ± .030
 .XXX = ± .015
 .XXXX = ± .005

	DRAWN BY D. HEATH	DATE 02.11.14
	CHECKED BY L.ADKISSON	DATE 02/13/2014
	SCALE 1:14	SHEET 2 OF 3

DRAWING NUMBER
PS267235-9-1-3-2

- NOTES:
- PRE-RINSE FAUCET: (KN50-1000-AF2) GOOSE NECK WITH BUILT IN PRE-RINSE INLET - 1/2" NPSM MALE WITH COMPRESSION FITTINGS OPERATING PRESSURE 20-125 PSI OPERATING TEMP RANGE 40-180 DEG. F
 - UTILITY REQUIREMENT
 COLD WATER - 20 TO 50 PSIG 70 DEG. F MAX
 HOT WATER - 20 TO 50 PSIG 120 DEG. F TO 140 DEG. F
 - SINK DRAIN: SINK OPENING DIA.: 3-1/2" NPS: 1-1/2" FACE FLANGE DIA.: 4-1/2"
 - AIR GUN WITH STANDARD 5 TIP GUN & HOSE MCMMASTER 3321K3 & 54635K1
 - AIR INLET: WATER SAVER B1131 WITH B1136-02-08R
 - 300 SERIES STAINLESS STEEL
 - WELDED CONSTRUCTION
 - LINEAR UNIT : CONSISTING OF CYLINDER AND A LINEAR GUIDE. LOAD MAX 1.500 N PER CYLINDER LIFT LENGTH UP TO 300 MM (11.82")
 - PUMP:
 MAX LOAD: 1.000 KG
 MAXIMUM LIFT SPEED WITH ELECTRIC MOTOR 30 MM/S (1.18"/S)
 - ELECTRIC DRIVE:
 SYSTEM VOLTAGE: 230/110 VAC
 ENGINE VOLTAGE: 29 VDC
 NOMINAL RATING APPROX: 140VA
 NOMINAL SPEED 120 MIN-1
 OVERLOAD PROTECTION

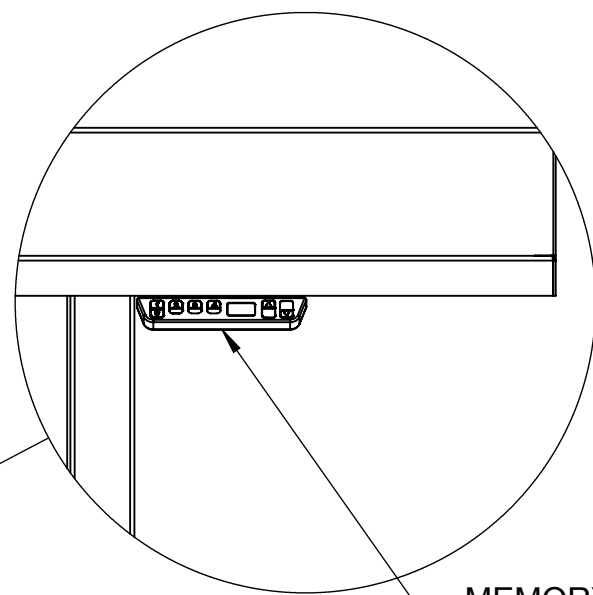
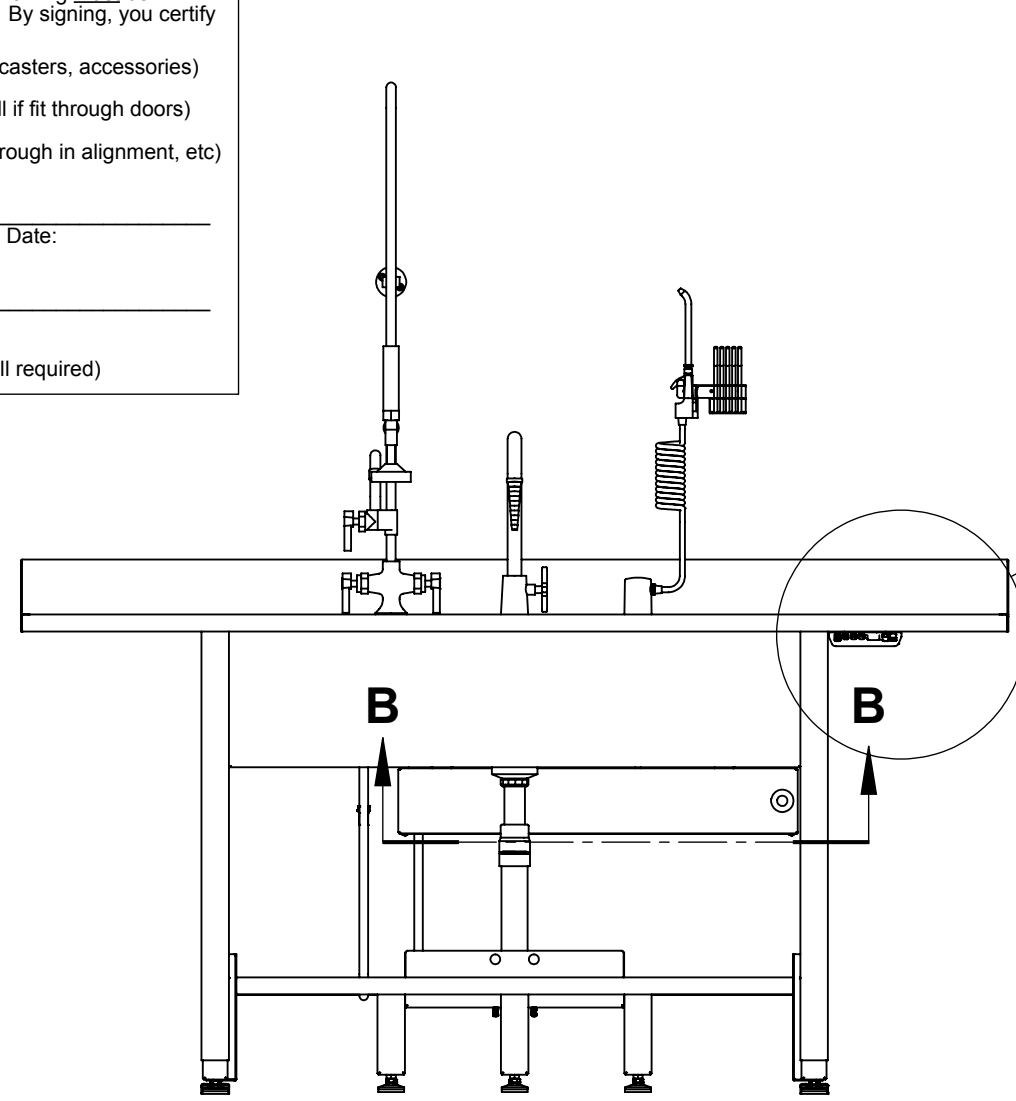
REV.	DESCRIPTION	CHANGED BY:	DATE
-	See APPROVAL-1	-	-
REVISIONS			

CONFIDENTIAL & PROPRIETARY TO FUTURE HEALTH CONCEPT NOT TO BE COPIED OR SHOWN TO ANYONE WITHOUT THE EXPRESS PERMISSION OF FHC

Design Approval- **ALL CUSTOM DESIGNS ARE NON-CANCELLABLE AND NON-RETURNABLE.** This endorsed approval drawing must be received in order to release your order for production. By signing, you certify your approval in the following areas:

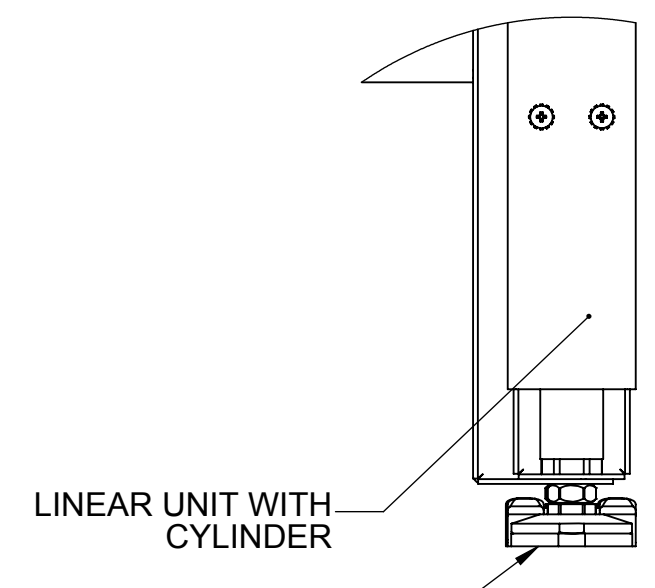
-Overall Dimensions -Hardware (fixtures, casters, accessories)
 -Material -Delivery Access (will it fit through doors)
 -Construction and Design -Facility Integration (rough in alignment, etc)

Approval Signature _____ Date: _____
 Print Name and Title _____
 (Signature, Date, Printed Name & Title are all required)



DETAIL A
SCALE 1 : 6

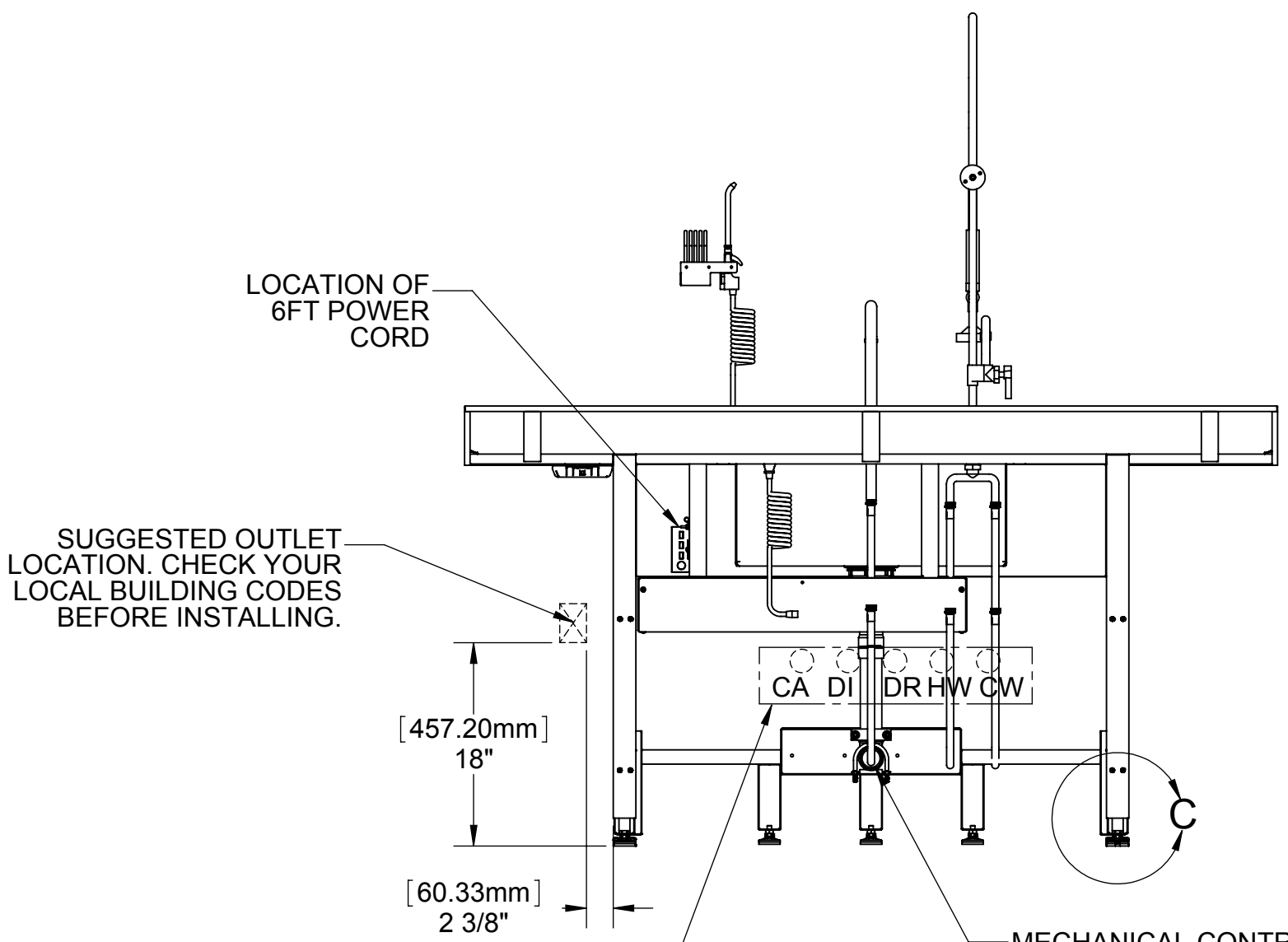
MEMORY CONTROL PAD



LINEAR UNIT WITH CYLINDER

RUBBER ADJUSTABLE LEVELER

DETAIL C
SCALE 1 : 3



LOCATION OF 6FT POWER CORD

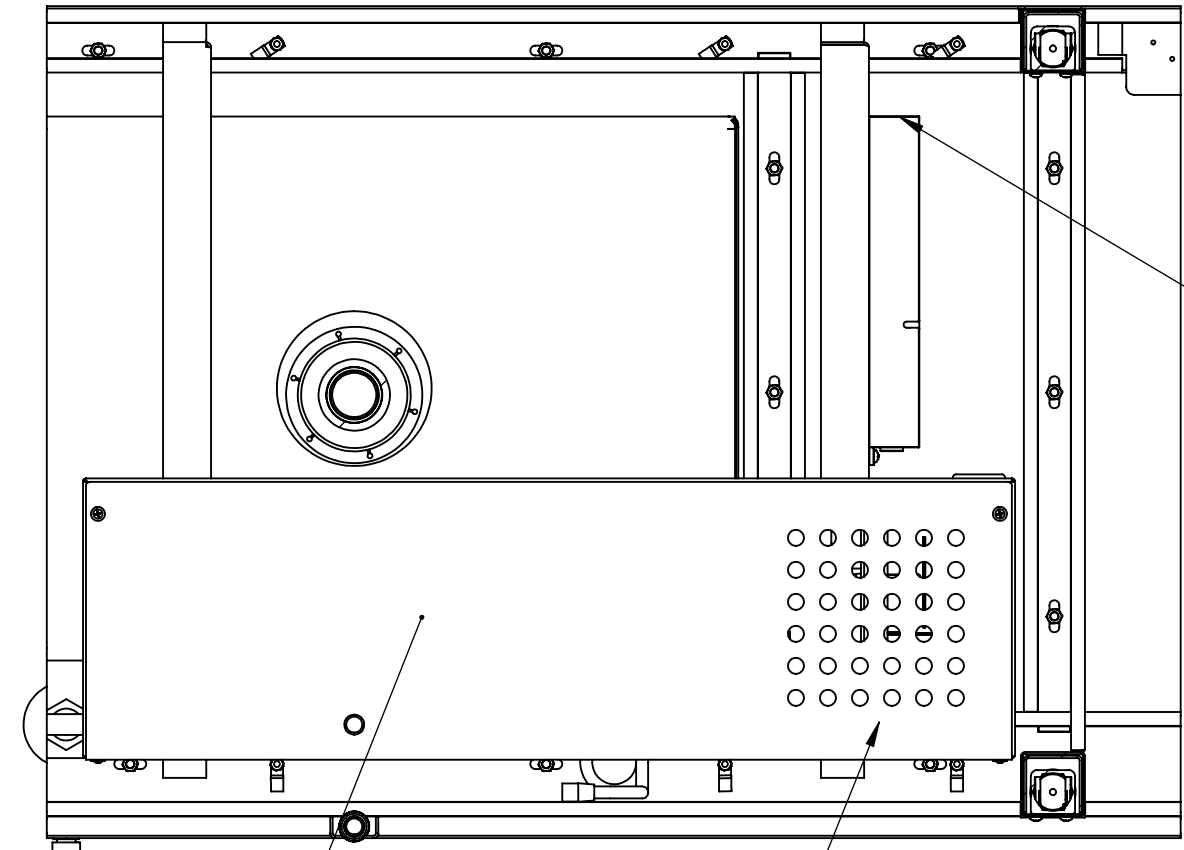
SUGGESTED OUTLET LOCATION. CHECK YOUR LOCAL BUILDING CODES BEFORE INSTALLING.

[457.20mm]
18"

[60.33mm]
2 3/8"

CHECK LOCAL CODES FOR LOCATION

MECHANICAL CONTRACTOR TO CONNECT TO EXISTING FLOOR OR WALL DRAIN IN ACCORDANCE WITH APPLICABLE LOCAL CODE STANDARDS.



POWER CORD LOCATION

PUMP WITH COVER

ELECTRIC MOTOR

SECTION B-B
SCALE 1 : 6

ANY PHYSICAL, DIMENSIONAL OR PERFORMANCE SPECIFICATIONS SHALL NOT BE REVISED WITHOUT WRITTEN AUTHORIZATION FROM FHC		
	THIRD ANGLE PROJECTION	INCHES
CRITICAL TO QUALITY	Weight (pounds)	278.73
TITLE ADJ. HEIGHT PROCESSING SINGLE SINK 26" X 72 1/2" X 35-42"		
TOLERANCES UNLESS OTHERWISE SPECIFIED		
ANGLES: ±1°	DECIMALS .XX = ± .030	
FRACTIONS: ± 1/64	.XXX = ± .015	.XXXX = ± .005
	DRAWN BY D. HEATH	DATE 02.11.14
	CHECKED BY L.ADKISSON	DATE 02/13/2014
	SCALE 1:14	SHEET 3 OF 3
DRAWING NUMBER PS267235-9-1-3-2		

CONFIDENTIAL & PROPRIETARY TO FUTURE HEALTH CONCEPT NOT TO BE COPIED OR SHOWN TO ANYONE WITHOUT THE EXPRESS PERMISSION OF FHC

- RECOMMENDATIONS:**
- UTILITY CONNECTIONS: BRADED HOSES ARE USED THEY NEED TO HAVE 12 TO 13" OF PLAY IN ORDER TO ALLOW SINK TO RAISE AND LOWER.
 - CHECK ALL LOCAL CODES

REV.	DESCRIPTION	CHANGED BY:	DATE
	See Sheet1		
REVISIONS			